

UTILITY PRESSURE GAUGE

commercial gauge **BOURDON TYPE**

airmaster

||||| **A**

SPECIAL FEATURES

- ECONOMICAL VERSION
- GENERAL PURPOSE APPLICATION

APPLICATIONS

F. R. L. UNITS, WATER, AIR, HYDRAULIC, PNEUMATICS, VALVE POSITIONER, SUGAR MILLS & ALLIED PROCESS INDUSTRIES.



SPECIFICATIONS

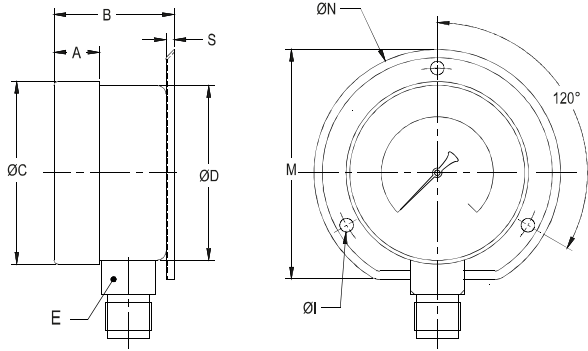
STANDARD VERSION: 40mm, 50mm, 63mm, 90mm, 100mm, 150mm & 250mm

Accuracy	: ± 2% of F.S.
Ambient Temperature	: -25°C to + 65°C
Process Temperature	: Maximum 120°C
Operating Pressure	: 75% of the Scale Value
Over Pressure Limit	: ≤ 100 kg/cm ² : 125% of Max. Scale Value
	: > 100 to ≤ 600 kg/cm ² : 115% of Max. Scale Value
	: > 600 to ≤ 1600 kg/cm ² : 110% of Max. Scale Value

Case	: Steel, powder coated / painted (Push fit type)
Ring	: Steel, powder coated / painted / cromium plated (Push fit type)
Bourdon	: Copper Alloy upto 100 kg/cm ² / AISI SS 316 Above 100 kg/cm ²
Socket	: BRASS
Movement	: BRASS
Joints	: Alloy Brazing / Soldering

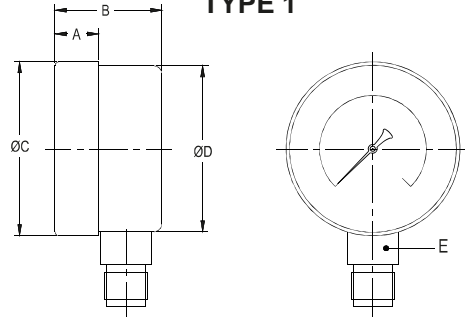
Dial	: Aluminium, black graduation on white background
Pointer	: Aluminium / Nylon - Black colored, Fixed
Window	: Sheet Glass

TYPE 2



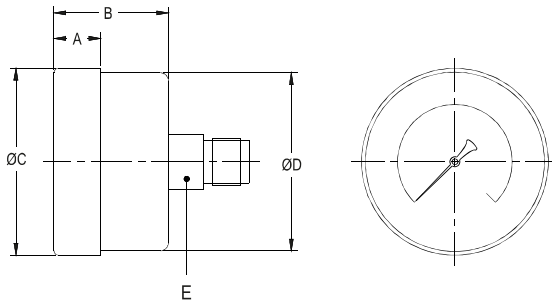
NS	A	B	ØC	ØD	E	M	S	ØN	ØI	Weight (With Box)
90	13.7	38.6	94	91.5	17	109.6	4.5	115	3.7	288
100	13.0	37.0	105	103.4	17	119.0	5.5	127	3.7	325
150	15.9	42.3	151	150.0	17	175.0	6.5	186	3.7	600
250	23.7	49.0	240	237.0	17	-	7.5	272	4.8	1680

TYPE 1



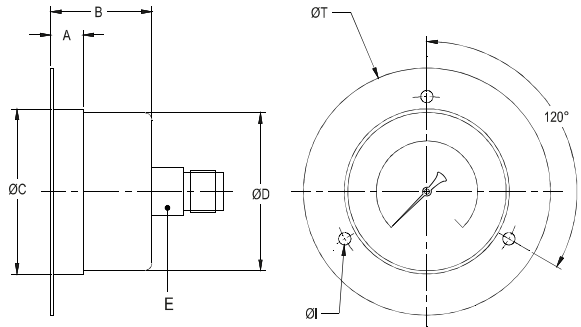
NS	A	B	ØC	ØD	E	Weight (With Box)
40	8.75	28.00	43.30	42.00	11	68
50	8.50	26.00	52.70	51.25	14	93
63	10.40	27.50	62.30	60.90	14	111
90	13.70	34.20	94.00	91.50	17	250
100	13.00	31.50	105.00	103.40	17	300
150	15.90	35.80	151.00	150.00	17	550
250	23.70	40.90	240.00	237.00	17	1600

TYPE 3



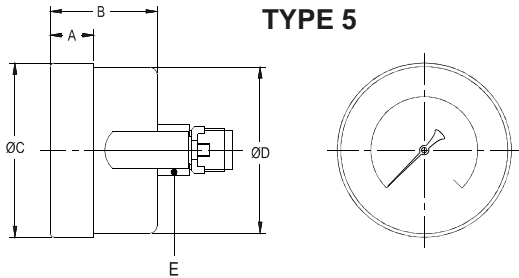
NS	A	B	ØC	ØD	E	Weight (With Box)
40	8.75	28.0	43.3	42.0	11	62.5
50	8.5	26.0	52.7	51.2	14	111.0
63	10.4	27.5	62.3	60.9	14	128.5
100	13.0	31.5	105.0	103.4	17	315.0
150	15.9	35.8	151.0	150.0	17	600.0

TYPE 4



NS	A	B	ØC	ØD	E	ØT	ØI	Weight (With Box)
50	9.30	26.0	52.7	51.2	14	78	4.5	137.0
63	15.00	30.0	62.3	60.9	14	90	4.5	143.5
100	15.75	35.5	105.0	103.4	17	135	5	348.5
150	19.00	40.5	151.0	150.0	17	180	5	600.0

TYPE 5



NS	A	B	ØC	ØD	E	Weight (With Box)
50	8.50	26.0	52.7	51.3	14	140.0
63	10.40	27.5	62.3	60.9	14	150.0

Notes: *Drawings are not to scale. *All Dimensions are in mm. *NS = Nominal Size.

RANGE TABLE

Note : Airmaster offers National / International Scales like kPa, Mpa, bar, psi, kg/cm², mbar, mmWC, inWC & Dual Scale like kPa with psi, kPa with bar, bar with psi or Equivalent scales as per the requirement can be provided on request

Following are the example tables for kg/cm² & psi scales.

RANGE WITH NOMINAL SIZES

NOMINAL SIZES		40	50	63	90	100	150	250
RANGE (PSI with kg/cm²)								
RANGE PSI	RANGE kg/cm²							
VACUUM								
-30 inHg / 0	-760 mmHg / 0	✓	✓	✓	✓	✓	✓	✓
PRESSURE								
0/15	0/1	✓	✓	✓	✓	✓	✓	✓
0/30	0/2	✓	✓	✓	✓	✓	✓	✓
0/60	0/4	✓	✓	✓	✓	✓	✓	✓
0/100	0/7	✓	✓	✓	✓	✓	✓	✓
0/150	0/10	✓	✓	✓	✓	✓	✓	✓
0/250	0/17.5	✓	✓	✓	✓	✓	✓	✓
0/300	0/21	✓	✓	✓	✓	✓	✓	✓
0/400	0/28	✓	✓	✓	✓	✓	✓	✓
0/500	0/35	✓	✓	✓	✓	✓	✓	✓
0/600	0/42	✓	✓	✓	✓	✓	✓	✓
0/1000	0/70	✓	✓	✓	✓	✓	✓	✓
0/1500	0/100	X	X	✓	✓	✓	✓	✓
0/2500	0/175	X	X	✓	✓	✓	✓	✓
0/3000	0/210	X	X	✓	✓	✓	✓	✓
0/4000	0/280	X	X	✓	✓	✓	✓	✓
0/5000	0/350	X	X	✓	✓	✓	✓	✓
0/6000	0/400	X	X	✓	✓	✓	✓	✓
0/10000	0/700	X	X	X	X	✓	✓	X
0/15000	0/1000	X	X	X	X	✓	✓	X
COMPOUND								
-30inHg/15	-1/1 kg/cm ²	X	X	X	X	✓	✓	X
-30inHg/30	-1/2 kg/cm ²	X	X	X	X	✓	✓	X
-30inHg/60	-1/4 kg/cm ²	X	X	X	X	✓	✓	X
-30inHg/100	-1/7 kg/cm ²	X	X	X	X	✓	✓	X
-30inHg/150	-1/10 kg/cm ²	X	X	X	X	✓	✓	X
-30inHg/200	-1/14 kg/cm ²	X	X	X	X	✓	✓	X
-30inHg/300	-1/21 kg/cm ²	X	X	X	X	✓	✓	X

RANGE single scale kg/cm²								
PRESSURE								
	0/1	X	✓	✓	✓	✓	✓	X
	0/6	X	✓	✓	✓	✓	✓	X
	0/10	X	✓	✓	✓	✓	✓	X
	0/16	X	✓	✓	✓	✓	✓	X
	0/25	X	✓	✓	✓	✓	✓	X
	0/50	X	✓	✓	✓	✓	✓	X

*Ask for more range chart and special dial design on request.

