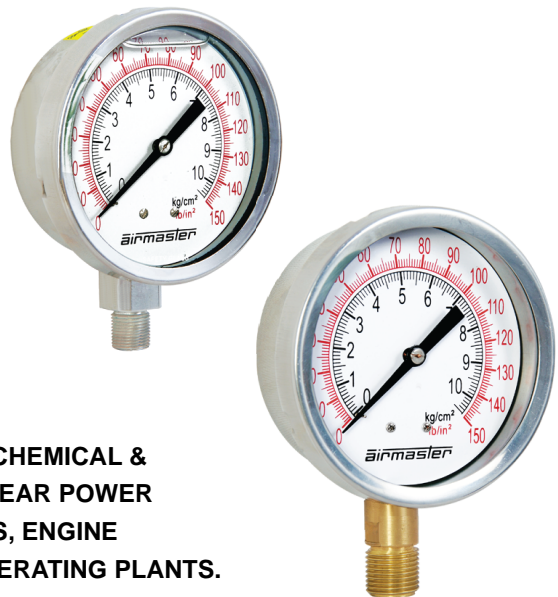


SPECIAL FEATURES

- STAINLESS STEEL CASE & MEASURING SYSTEM
- SOCKET & CASE WELDED*
- DRY OR LIQUID FILLED
- ACCURACY UPTO ±1%
- INTERNAL BRASS AVAILABLE



APPLICATIONS

FOOD & BEVERAGE, PHARMACEUTICAL, CRYOGENICS, CHEMICAL & PETROCHEMICAL INDUSTRIES, CONVENTIONAL & NUCLEAR POWER PLANTS, PUMPS, HYDRO-CLENGING MACHINES, PRESSES, ENGINE COMPRESSORS, TURBINES, DIESEL ENGINES & REFRIGERATING PLANTS.

SPECIFICATIONS

STANDARD VERSION: 100mm, 150mm, 250mm

Accuracy	: ± 1.0% of F.S.
Ambient Temperature	: -25°C to + 65°C
Process Temperature	: Maximum 300°C
Operating Pressure	: 75% of the Scale Value
Over Pressure Limit	: 30% for the Pressure Ranges upto 600 kg/cm ² 15% for the Pressure Ranges above 600 kg/cm ²

Case	: AISI 304 SS
Ring	: AISI 304 SS, Bayonet Type
Bourdon	: AISI 316 SS / BRASS
Socket	: AISI 316 SS / BRASS
Movement	: AISI 304 SS / BRASS
Joints	: Tig Argon Arc Welding / Alloy Brazing / Soldering

Protection	: IP 65
Dial	: Alluminium, Black Graduation on white background
Pointer	: Alluminium, Black Coloured, Zero Adjustable
Window	: Toughened / Safety Glass
Blow of Disc	: Neoprene
Gasket	: Neoprene

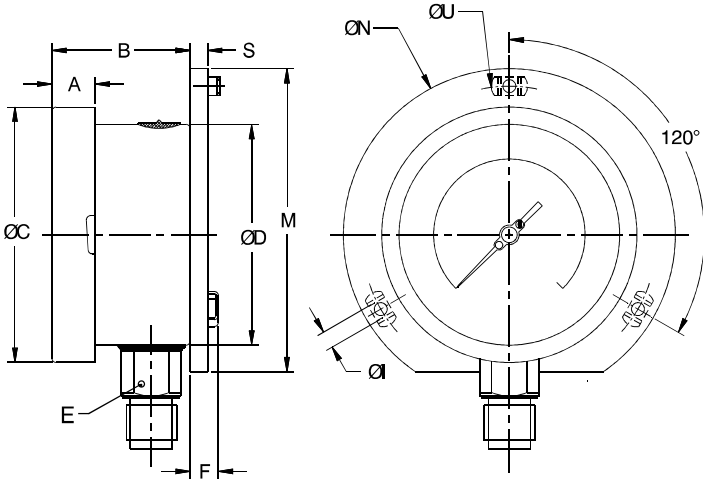
GLYCERIN FILLED VERSION (OPTION GLY)

Accuracy	: ± 1.0% of F.S.
Ambient Temperature	: Maximum 65°C
Process Temperature	: +15°C / 65°C
Window	: Toughened / Safety Glass
Dampening Liquids	: Glycerin 98%
Other Features	: Refer Specifaicon of Standard Version

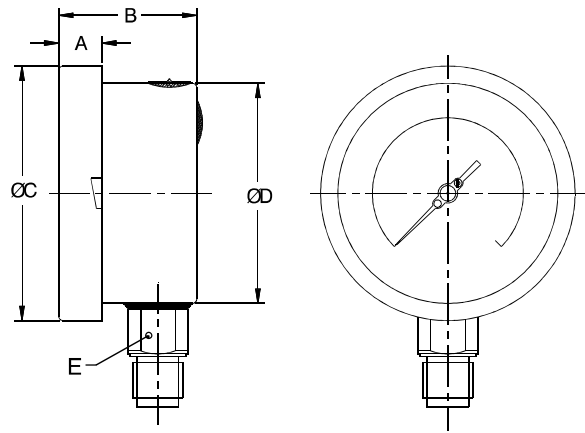
*In All SS Gauge Only

DIMENSIONS - STANDARD VERSION

TYPE 2



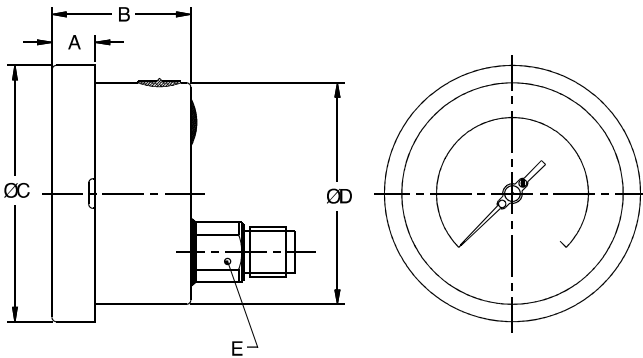
TYPE 1



NS	A	B	ØC	ØD	E	M	S	F	ØI	ØN	ØU	Weight (With Glycerin & Box)
100	16.5	47.5	111.5	100	17	128	6	14.5	6	134	118	930
150	16.0	49.5	164.5	147	17	177	5.5	15	6	186	168	1760

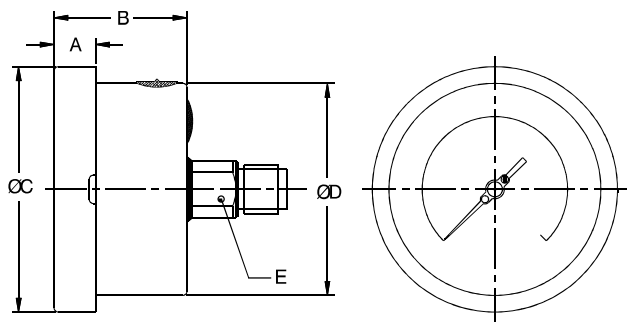
NS	A	B	ØC	ØD	E	Weight (With Glycerin & Box)
100	16.5	47.5	111.5	100	17	905
150	16.0	49.5	164.5	147	17	1700
250	17.0	53.0	260.0	245	17	2500

TYPE 6



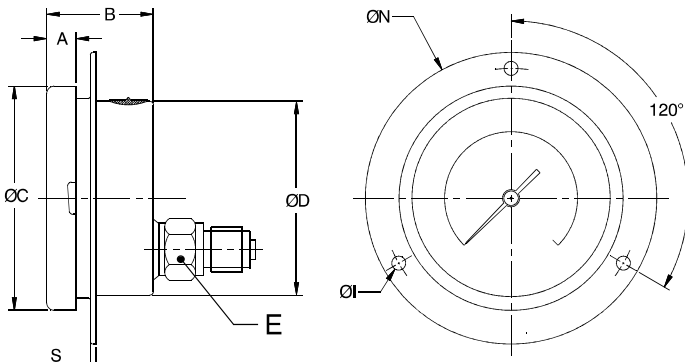
NS	A	B	ØC	ØD	E	Weight (With Glycerin & Box)
100	16.5	47.5	111.5	100	17	905
150	16.0	49.5	164.5	147	17	1700

TYPE 3



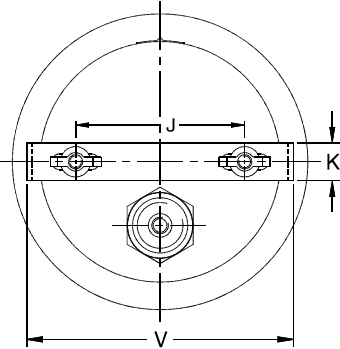
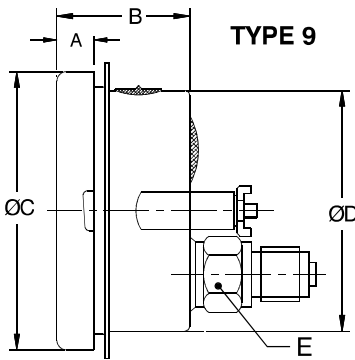
NS	A	B	ØC	ØD	E	Weight (With Glycerin & Box)
100	16.5	47.5	111.5	100	17	905
150	16.0	49.5	164.5	147	17	1700

TYPE 5



NS	A	B	ØC	ØD	E	S	ØI	ØN	Weight (With Glycerin & Box)
100	16.5	47.5	111.5	100	17	6.5	6	134	930
150	16.0	49.5	164.5	147	17	5.5	6	186	1760

Notes: *Drawings are not to scale. *All Dimensions are in mm. *NS = Nominal Size.



NS	A	B	ØC	ØD	E	J	K	V	Weight with Glycerin & Box
100	12.5	48	110	100	22	66.5	16	106	750.0
150	15	49	161	149	22	103.5	16	158	1220.0

Notes: *Drawings are not to scale. *All Dimensions are in mm. *NS = Nominal Size.

RANGE TABLE

Note : Airmaster offers National / International Scales like kPa, Mpa, bar, psi, kg/cm², mbar, mmWC, inWC & Dual Scale like kPa with psi, kPa with bar, bar with psi or Equivalent scales as per the requirement can be provided on request

Following are the example tables for kg/cm² & psi scales.

PRESSURE

SINGLE SCALE (kg/cm ² or bar)				
RANGE	RANGE	RANGE	RANGE	RANGE
0/0.6	0/4	0/25	0/160	0/1000
0/1	0/6	0/40	0/250	0/1600
0/1.6	0/10	0/60	0/400	0/2100
0/2.5	0/16	0/100	0/600	0/2500

DUAL SCALE (PSI with kg/cm ²)					
RANGE (PSI)	RANGE (kg/cm ²)	RANGE (PSI)	RANGE (kg/cm ²)	RANGE (PSI)	RANGE (kg/cm ²)
0/15	0/1	0/400	0/28	0/4000	0/280
0/30	0/2	0/500	0/35	0/5000	0/350
0/60	0/4	0/600	0/40	0/6000	0/400
0/100	0/7	0/1000	0/70	0/10000	0/700
0/150	0/10	0/1500	0/100	0/15000	0/1000
0/200	0/14	0/2000	0/140	0/20000	0/1400
0/300	0/20	0/3000	0/200	0/23000	0/1600

* Note: For ranges above 1600 kg/cm², please consult us

VACUUM & COMPOUND

DUAL SCALE (inHG with PSI & mmHg with kg/cm ²)					
RANGE	RANGE	RANGE (PSI)	RANGE (kg/cm ²)	RANGE (PSI)	RANGE (kg/cm ²)
inHG with PSI	mmHG with kg/cm ²	inHG with PSI	mmHG with kg/cm ²	inHG with PSI	mmHG with kg/cm ²
-30/0	-760/0	-30/60	-760/4	-30/20	-760/14
-30/15	-760/1	-30/100	-760/7	-30/300	-760/21
-30/30	-760/2	-30/150	-760/10	-30/350	-760/24

SINGLE SCALE (kg/cm ²)			
RANGE	RANGE	RANGE	RANGE
-1/0	-1/1.5	-1/5	-1/15
-1/0.6	-1/3	-1/9	-1/24



HOW TO ORDER

BASIC MODEL

CODE	13	14	15	C
NOMINAL SIZE (MM)	100 mm	150 mm	250 mm	13

TYPE OF MOUNTING

1 DIRECT BOTTOM ENTRY	1
2 SURFACE/WALL/PROJECTION MOUNTING WITH BOTTOM ENTRY	
3 DIRECT LOWER BACK ENTRY	
5 BACK ENTRY WITH MOUNTING BRACKET	

GAUGE CONNECTION

2B 1/4" BSP (M)	3N 3/8" NPT (M)	3B
2N 1/4" NPT (M)	4N 1/2" NPT (M) STANDARD	
3B 3/8" BSP (M) STANDARD	M12 M 12 X 1 (M)	
4B 1/2" BSP (M) STANDARD	M20 M 20 X 1.5 (M)	

**Note: Connections like PT/PF/Flaired/UNF/G/R etc. can be provided on request.
Non standard connections can be provided through adoptors.**

RANGE

REFER TABLES **70KG**

OPTIONS

GLY LIQUID GLYCERINE FILLED **GLY**

Ordering Example:

C - 13 - 1 - 3B - 70KG - GLY

Note: * Due to continuous improbement, the specification may vary from time to time.

FOR NON STANDARD PRODUCTS./ OPTIONAL ITEMS, PLEASE CONTACT FACTORY FOR DELIVERY AND MINIMUM QUANTITY OF ORDER.