

STAINLESS STEEL PRESSURE GAUGE

BOURDON TYPE

airmaster



SPECIAL FEATURES

- COST EFFECTIVE
- RUGGED BUT SLEED DESIGN
- DRY OR LIQUID FILLED
- AVAILABLE IN ALL STAINLESS STEEL OR INTERNAL BRASS

APPLICATIONS

FOOD & BEVERAGE, PHARMACEUTICAL, CRYOGENICS, CHEMICAL & PETROCHEMICAL INDUSTRIES, CONVENTIONAL & NUCLEAR POWER PLANTS, PUMPS, HYDRO-CLEANING MACHINES, PRESSES, ENGINE COMPRESSORS, TURBINES, DIESEL ENGINES & REFRIGERATING PLANTS.

SPECIFICATIONS

STANDARD VERSION: 50mm, 63mm, 100mm

Accuracy	: $\pm 1.6\%$ of F.S.
Ambient Temperature	: -40°C to $+60^{\circ}\text{C}$
Process Temperature	: Maximum 100°C
Operating Pressure	: 75% of the Scale Value
Over Pressure Limit	: 20% for the Pressure Ranges upto 600 kg/cm^2 15% for the Pressure Ranges above 600 kg/cm^2

Case	: AISI 304 SS
Ring	: AISI 304SS, Bionet & Rolling Type
Bourdon	: AISI 316 SS / BRASS
Socket	: AISI 316 SS / BRASS
Movement	: AISI 304 SS / BRASS
Joints	: Tig Argon Arc Welding / Alloy Brazing / Soldering

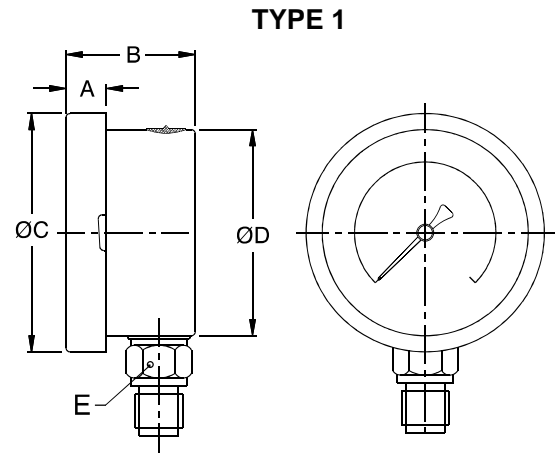
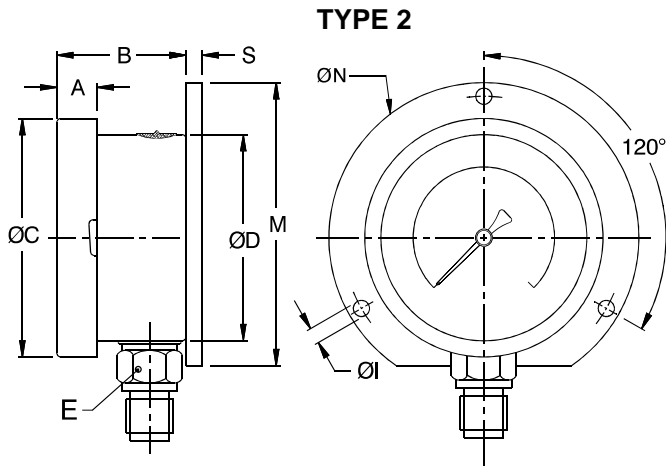
Protection	: IP 65
Dial	: Alluminium, Black Graduation on white background
Pointer	: Alluminium, Black Coloured, Fixed
Window	: Plexi Glass or Heat Treaded Glass
Gasket	: Neoprene
Filling Plug	: Neoprene

GLYCERIN FILLED VERSION (OPTION GLY)

Ambient Temperature	: Maximum 65°C
Process Temperature	: $+15^{\circ}\text{C}$ / 65°C
Window	: Heat Treated Glass
Dampening Liquid	: Glycerine 98%
Other Features	: Refer Specificaion of Standard Version

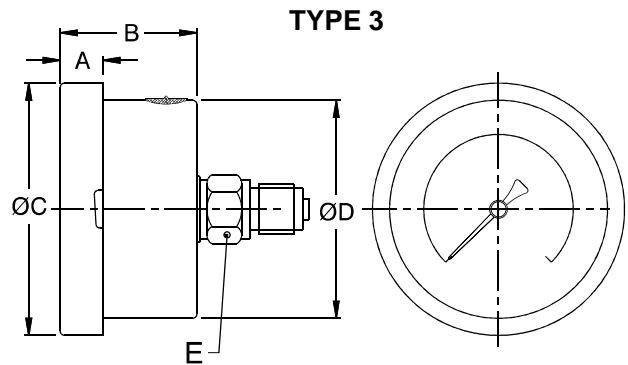
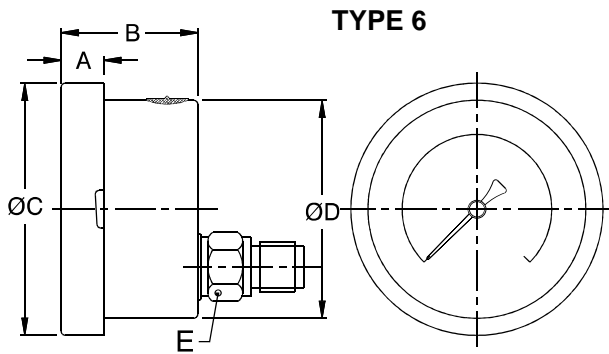


DIMENSIONS - STANDARD VERSION



Type	NS	A	B	ØC	ØD	E	S	ØN	ØI	Weight (With Glycerin & Box)
Bionet	100	16.1	34	111.6	99.7	A/F 17	6.5	134	6	610

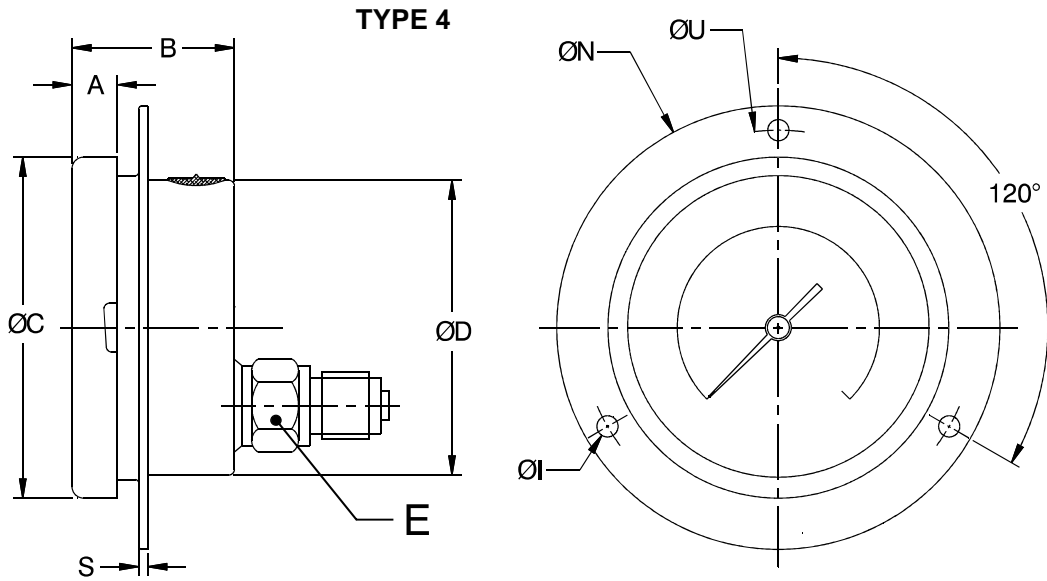
Type	NS	A	B	ØC	ØD	E	Weight (With Glycerin & Box)
Bionet	50	12.0	30.50	60.50	51.0	A/F 14	200
Bionet	63	10.5	31.75	71.15	61.0	A/F 14	228
Bionet	100	16.1	34.00	111.60	99.7	A/F 17	580
Rolling	63	5.0	29.75	67.15	61	A/F 14	214



Type	NS	A	B	ØC	ØD	E	Weight (With Glycerin & Box)
Bionet	50	12.0	30.50	60.50	51.0	A/F 14	210
Bionet	63	10.5	31.75	71.15	61.0	A/F 14	230
Bionet	100	16.1	34.00	111.60	99.7	A/F 17	590
Rolling	63	5.0	29.75	67.15	61	A/F 14	217

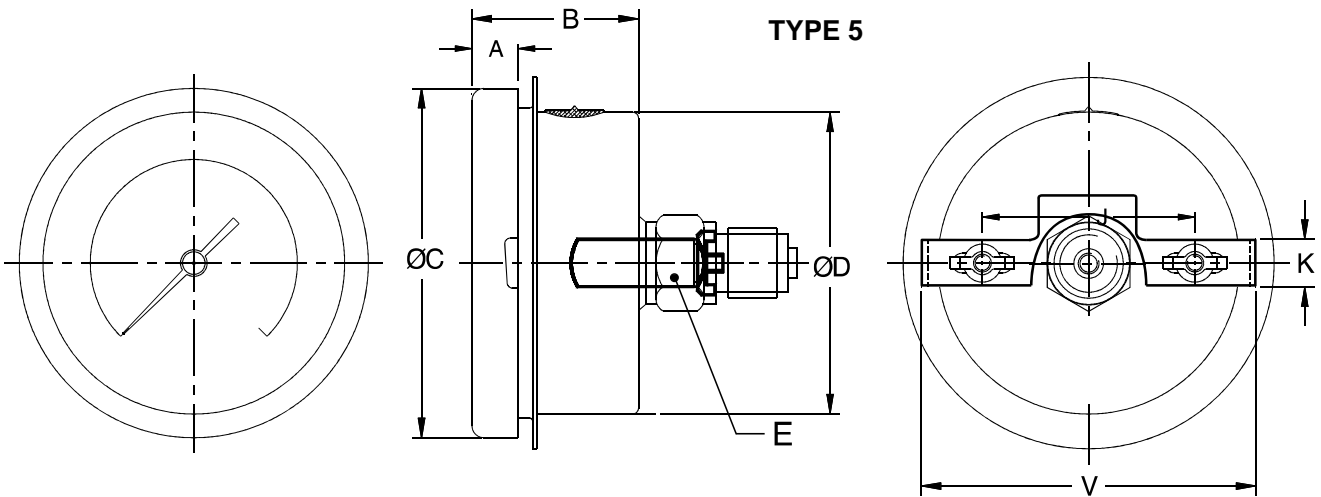
Type	NS	A	B	ØC	ØD	E	Weight (With Glycerin & Box)
Bionet	50	12.0	30.50	60.50	51.0	A/F 14	210
Bionet	63	10.5	31.75	71.15	61.0	A/F 14	230
Bionet	100	16.1	34.00	111.60	99.7	A/F 17	590
Rolling	63	5.0	29.75	67.15	61	A/F 14	217

Notes: *Drawings are not to scale. *All Dimensions are in mm. *NS = Nominal Size.



BAYONET TYPE

Type	NS	A	B	ØC	ØD	E	S	ØN	ØI	Weight (With Glycerin & Box)
Bionet 63	10.5	31.75	71.15	61	A/F 14	5.5	91	3.95	270	
Bionet 100	16.1	34	111.6	99.7	A/F 17	6.5	134	6	625	
Rolling 63	5	29.75	67.15	61	A/F 14	5.5	91	3.95	257	



Type	NS	A	B	ØC	ØD	E	J	K	V	Weight (With Glycerin & Box)
Bionet 63	10.5	31.75	71.15	61	A/F 14	48.5	14	67	270	
Bionet 100	16.1	34	111.6	99.7	A/F 17	90.5	19	127.5	625	
Rolling 63	5	29.75	67.15	61	A/F 14	48.5	14	67	257	

Notes: *Drawings are not to scale. *All Dimensions are in mm. *NS = Nominal Size.

G

RANGE TABLE

Note : Airmaster offers Pressure ranges, Vacuum ranges and Compound ranges in Scales like kPa, MPa, bar, psi, kg/cm² & Dual Scale as per the requirement can be provided on request

Following are the example tables for kg/cm² & psi scales.

PRESSURE RANGE

DUAL SCALE (PSI with kg/cm ²)			
RANGE PSI	RANGE kg/cm ²	RANGE PSI	RANGE kg/cm ²
-30inHg / 0	-760mmHg / 0	0/3000	0/210
0/15	0/1	0/4000	0/280
0/30	0/2	0/5000	0/350
0/60	0/4	0/6000	0/400
0/100	0/7	0/10000	0/700
0/150	0/10	0/15000	0/1000
0/200	0/14	-30inHg/15	-1/1
0/300	0/21	-30inHg/30	-1/2
0/400	0/28	-30inHg/60	-1/4
0/500	0/35	-30inHg/100	-1/7
0/600	0/40	-30inHg/150	-1/10
0/1000	0/70	-30inHg/200	-1/14
0/1500	0/100	-30inHg/300	-1/21
0/2000	0/140	-30inHg/350	-1/24

FREON (WITH TEMPERATURE SCALE)

DUAL SCALE (inHg to PSI)	
RANGE	RANGE
-30 / 150	0 / 300
-30 / 300	0 / 500

AMMONIA (WITH TEMPERATURE SCALE)

RANGE (kg/cm ²)	RANGE (PSI)
-1 to 12.5	-30 to 150
-1 to 16	-30 to 300
-1 to 25	0 to 300

HOW TO ORDER

BASIC MODEL

CODE	10	11	13
NOMINAL SIZE (MM)	50 mm	63 mm	100 mm

TYPE OF MOUNTING

1 DIRECT BOTTOM ENTRY	4 FLUSH PANEL BACK ENTRY WITH FRONT FLANGE
2 SURFACE/WALL MOUNTING WITH BOTTOM ENTRY	5 BACK ENTRY WITH MOUNTING BRACKET
3 DIRECT LOWER BACK ENTRY	6 DIRECT LOWER BACK ENTRY

GAUGE CONNECTION

2B 1/8" BSP (M)	2B 1/4" BSP (M) STANDARD
1N 1/8" NPT (M)	2N 1/4" NPT (M) STANDARD
3B 3/8" BSP (M) STANDARD	4B 1/2" BSP (M)

Note: Connections like PT/PF/Flaired/UNF/G/R etc. can be provided on request.
Non standard connections can be provided through adoptors.

RANGE

REFER TABLES

OPTIONS

GLY	LIQUID GLYCERINE FILLED
SS	FOR INTERNAL STAINLESS STEEL

Ordering Example: G - 13 - 1 - 3B - 70KG - GLY - SS

Note: * Due to continuous improvement, the specification may vary from time to time.

FOR NON STANDARD PRODUCTS./ OPTIONAL ITEMS, PLEASE CONTACT FACTORY FOR DELIVERY AND MINIMUM QUANTITY OF ORDER.

G4

www.airmaster.in
Since 1968

G

13

1

3B

70KG

GLY