

SEAL DIAPHRAGM PRESSURE GAUGE

DI APHRAGM TYPE

airmaster

DIRECT SEAL



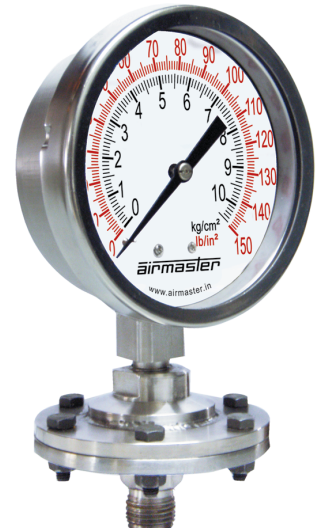
X

SPECIAL FEATURES

- ROBUST TWO PIECE DESIGN
- DIAPHRAGM IS WELDED TO THE BODY
- DRY OR LIQUID FILLED
- AVAILABE IN DIFFERENT MODELS i.e B, C & G

APPLICATIONS

DIAPHRAGM SEALS ARE DESIGNED TO ISOLATE THE SENSING ELEMENT OF PRESSURE GAUGE AND PRESSURE SWITCHES FROM PROCESS FLUIDS THAT THEY MAY BE CORROSIVE, VISCOUS, SEDIMENTOUS AND / OR WITH A HIGH TEMPERATURE.



SPECIFICATIONS

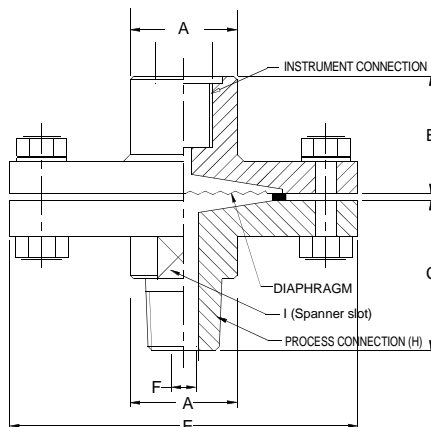
STANDARD VERSION

COMPATIBLE WITH MODEL B, C & G: 100mm & 150mm

Range	: 70 kg/cm ²
Process Temperature	: -40°C to 200° C or as per fill fluid
Instrument Connection	: 3/8" BSP (M) OR 1/2" BSP (M)
Fill Fluid	: Silicon Oil - DC 200

Diaphragm	: AISI 316L SS
Top Chamber	: AISI 304 SS / M.S. (PAINTED)
Bottom Chamber	: AISI 316 SS
Nut / Bolts	: AISI 304 SS / HIGH TENSILE
Sealing Gasket	: PTFE

DIMENSIONS - STANDARD VERSION



A	~ B	~ C	E	F	H	I	Approx. Wt. #
30	26	47	98	Ø8	½" BSP (M)	25	1500.0

(# Weight in grams with box for Standard Model.)

Notes: *Drawings are not to scale. *All Dimensions are in mm