

# COMPACT SEAL-DIAPHRAGM PRESSURE GAUGE

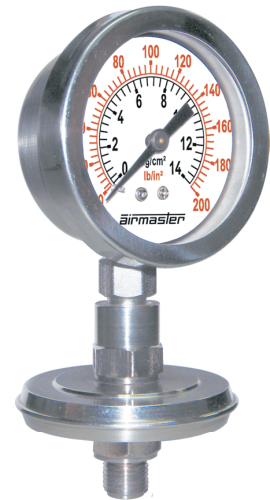
**airmaster**

□ □ □ □ □ □ □ □ **Z**

## SPECIAL FEATURES

- COST EFFECTIVE
- DRY OR LIQUID FILLED
- AVAILABLE IN ALL STAINLESS STEEL OR INTERNAL BRASS
- DIAPHRAGM IS WELDED TO THE BODY TO ENSURE SEPRATION OF THE FILLING FLUID FROM THE PROCESS MEDIUM

DI APHRAGM TYPE



## APPLICATIONS

DIAPHRAGM SEALS ARE DESIGNED TO ISOLATE THE SENDING ELEMENT OF PRESSURE GAUGES AND PRESSRE SWITCHES FROM PROCESS FLUIDS THAT THEY MAY BE CORROSIVE, VISCOUS, SEDIMENTOUS AND / OR WITH A HIGH TEMPERATURE.

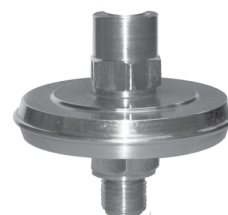
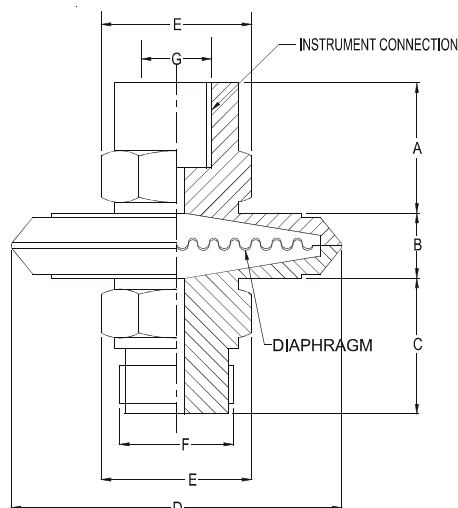
## SPECIFICATIONS

### STANDARD VERSION

**COMPATIBLE WITH MODEL G: 50mm, 63mm, 100mm**

Range	: 1 kg/cm <sup>2</sup> to 21 kg/cm <sup>2</sup>
Process Temperature	: -40°C to 200° C or as per fill fluid
Instrument Connection	: 1/4" BSP (M)
Fill Fluid	: Silicon Oil - DC 200
Diaphragm	: AISI 316L SS
Body	: AISI 316 SS

### DIMENSIONS - STANDARD VERSION



A	B	C	D	E	F	G	Approx Wt.
26	14	23	62	HEX A/F 19	1/4" BSP (M)	1/4" BSP (F)	260

\*Weight in Grams